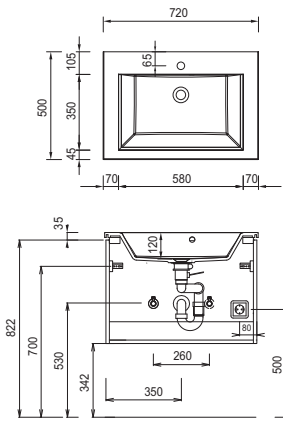
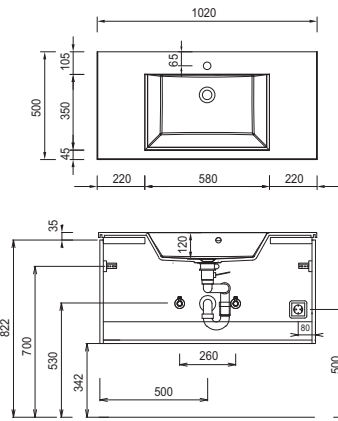


Program 052 - dimensional drawings

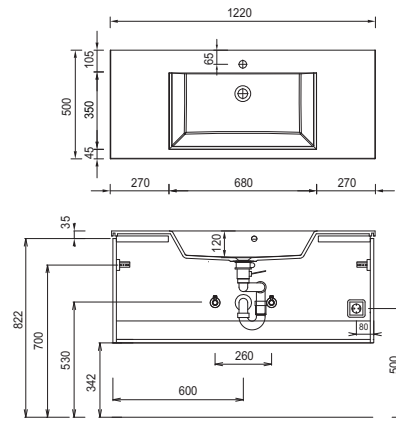
SET 7012 1



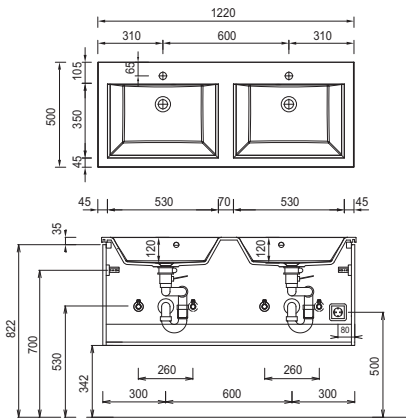
SET 1012 1



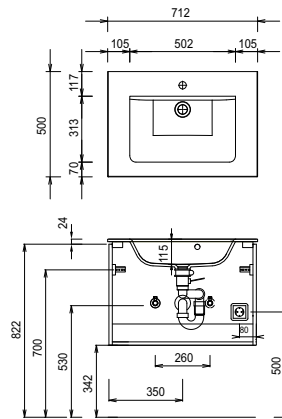
SET 1212 1



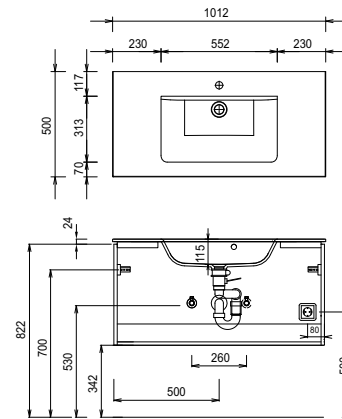
SET 122D 1



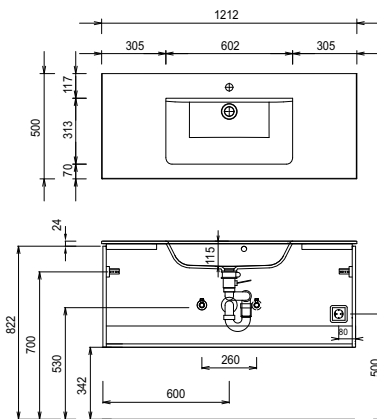
SET 7012 82



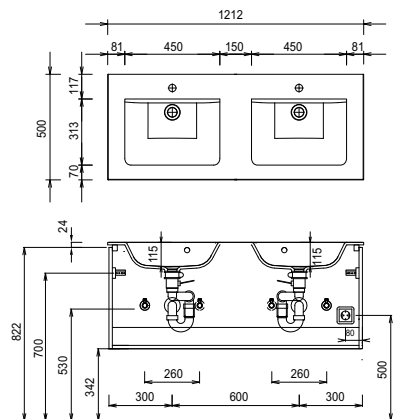
SET 1012 82



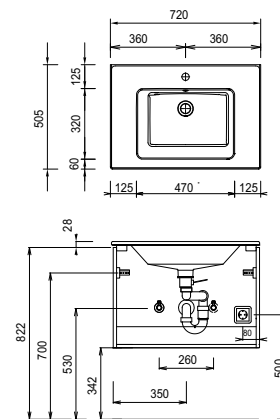
SET 1212 82



SET 122D 82



SET 7012 K1



Cast mineral:
 The water temperature must not exceed 55° C / 131° F. Hair tinting lotions have to be removed immediately, so that staining can be avoided.

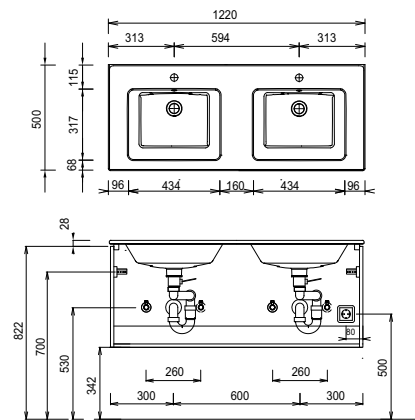
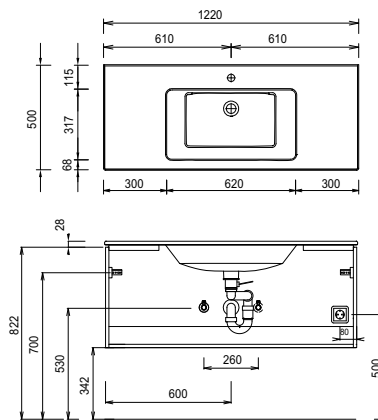
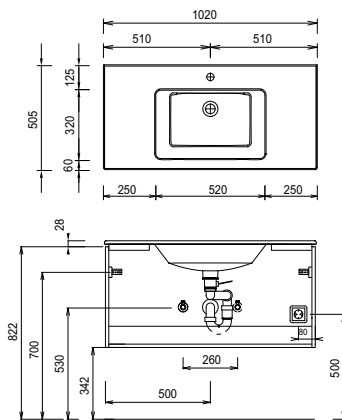
Modifications:
 Technical modifications (+/- 5mm) and flatness modifications (DIN 18202) are subject of the usual material-specific modifications for construction materials, based on DIN 18202.

Program 052 - dimensional drawings

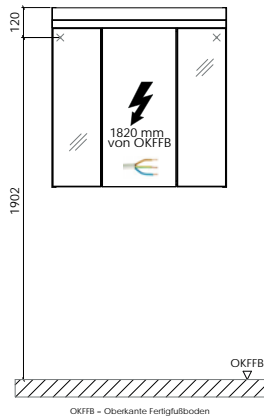
SET 1012 K1

SET 1212 K1

SET 122D K1



electrical connections for mirror cabinets



Cast mineral:

The water temperature must not exceed 55° C / 131° F. Hair tinting lotions have to be removed immediately, so that staining can be avoided.

Modifications:

Technical modifications (+/- 5mm) and flatness modifications (DIN 18202) are subject of the usual material-specific modifications for construction materials, based on DIN 18202.